

№ 52. НАД ОЗЕРОМ ВЕРБА

Ноты с сайта www.notarhiv.ru

Andante

Над

pp

Нар

This system contains the first two staves of the musical score. The top staff is a vocal line in treble clef, starting with a whole rest followed by a half note 'Над' (nad) with a dynamic marking of *p*. The bottom two staves are piano accompaniment in grand staff, starting with a whole rest followed by a half note chord, with a dynamic marking of *pp*. The key signature is one sharp (F#) and the time signature is 4/4.

о зе - ром вер - ба, над

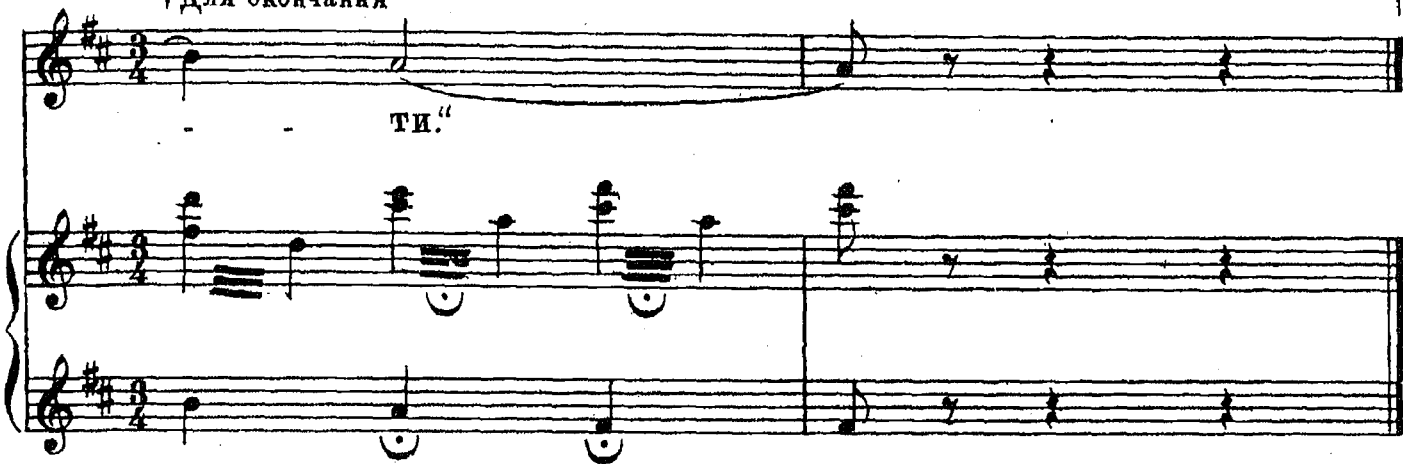
This system contains the next two staves. The vocal line continues with the lyrics 'о зе - ром вер - ба, над'. The piano accompaniment continues with chords and moving lines. The key signature and time signature remain the same.

о - зе - ром вер - ба, под

Для повторения

This system contains the final two staves. The vocal line continues with the lyrics 'о - зе - ром вер - ба, под'. A box labeled 'Для повторения' (For repetition) is placed above the vocal line. The piano accompaniment concludes with a final chord. The key signature and time signature remain the same.

Для окончания



Над озером верба,
Под вербою камень,
На камушке девка
Горчешенько плачет:
„Отдал меня батька
В турецкую землю,
В немецкую веру.
А я, молоденька,
Ничего не умею,
Ни прясти, ни ткати,
А только умею
Раненько вставати,
Косу заплетати.“